




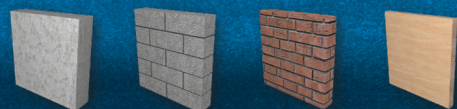
The Best Concrete Screw Anchor for Fastening into Concrete and Masonry Materials



BUILDING CODE APPROVED

-  Concrete ESR 4340
-  Masonry ESR 4339
-  Chemically Treated Wood ESR 4357
- AC257 Treated Lumber Certified
- Miami Dade County Product Approved
- Florida Building Code Approved
- California Building Code Approved

BASE MATERIALS



Concrete Masonry Brick Wood

AllPointsOrders@hillmangroup.com



(800)226-5555



WITH **WEATHER TUFF™** COATING

We've engineered the best performing code approved Concrete Screw Anchor for fastening into concrete, wood, and masonry materials. This new addition to the Solid Set™ lineup provides quality installations, dependable strength, an engineered design, and the confidence of building code approvals.

High Strength

- Manufactured from heat treated carbon steel for strength & durability

Weather Tuff™ Protection

- Epoxy coated and 410 stainless steel options available

Superior Strength Thread Design

- **Wide Serrated Threads** cut fast, easy & clean thread paths in concrete. Provides strong pullout & shear loads
- **Mid-Crossband Threads** provide drive stability and help break up & act as an exhaust port for concrete dust

Threaded to Tip

- No more chisel point concrete screws!
- Designed to quickly self-drill & penetrate wood

- ✓ Recommended for interior & exterior projects
- ✓ Can use a standard ANSI drill bit for installation
- ✓ 25% greater pullout values vs. competition
- ✓ 50% greater corrosion protection vs. competition
- ✓ Patented design ✓ Drives fast and easy

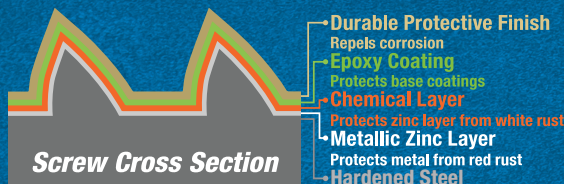


AllPointsOrders@hillmangroup.com (800) 226-5555

SUPERIOR CORROSION PROTECTION

Organic based multi layer coating system provides superior corrosion protection in treated lumber and outdoor application.

- Outperforms competition in salt spray testing
 - 50+% greater protection vs. competition
- Surpasses 1,500 hours of harsh testing
- Certified for use in exposure conditions 1 through 4 (reference ESR 4357 for detailed information)
- AC257 treated lumber certified



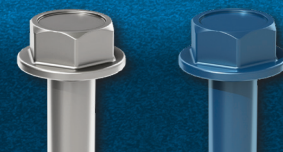
We are excited to introduce the Solid Set™ anchor line. It's patented thread design installs quickly and easily and is ideal for concrete and wood projects. Our Weather Tuff™ coating provides outstanding corrosion resistance. The Solid Set line holds Miami Dade Product Approval and Florida Building Code Approval as well as core anchors with ICC Evaluation. The anchors are available in colors to match your projects and many diameters and lengths allow for your precise applications.

AVAILABLE STYLES *Available in colors to match or complement projects

Flat Phillips & Star Drive



Hex Washer Head



Large Flange Head

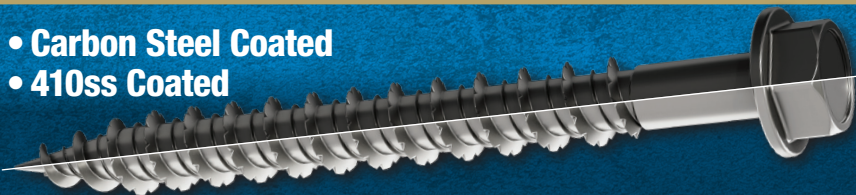


Male & Female Hurricane Anchors



AVAILABLE MATERIALS

- Carbon Steel Coated
- 410ss Coated



AVAILABLE SIZES

3/16", 1/4", #14 and 5/16" in a Wide Variety of Lengths

Salt Spray



Competitor A

Competitor B

0 Hours



648 Hours



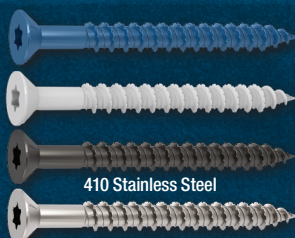
1,500 Hours



PRODUCT SELECTION

Flat Head Phil/Star Drive

- Wood & countersunk hole applications
- No strip installs
- Available sizes: 3/16", 1/4", 5/16"



410 Stainless Steel

Hex Washer Head

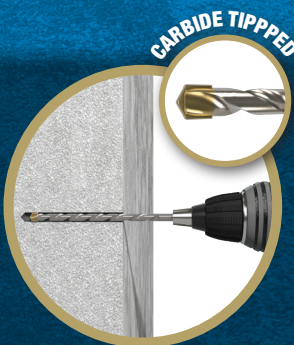
- Metal & flat fixture to solid material applications
- Full crown hex head & underhead chamfer design provides strong & confident installs
- Available sizes: 3/16", 1/4", 5/16"



410 Stainless Steel

Carbide Tipped Drill Bits

- Straight Shank & SDS Plus
- Available sizes: 3/16", 5/32" and 1/4" up to 7 1/2" in length



*Available in colors to match or complement projects